



ASDH MaxWT Field Repairable Hook Load Transducer

Mechanical

Material: Aluminum and Stainless Steel
Frame Size: 11.4 x 12.5 x 5 inches
Weight: 15 lbs
Connector: Customer Specified
Wire Rope Range: 7/8 to 2 1/8 inches
Weight Range: 100K typical, can be specified by the customer

Electronic Certifications

Intrinsically Safe Certified
Locations: Zone 1 when used with an approved safety barrier.

Electrical

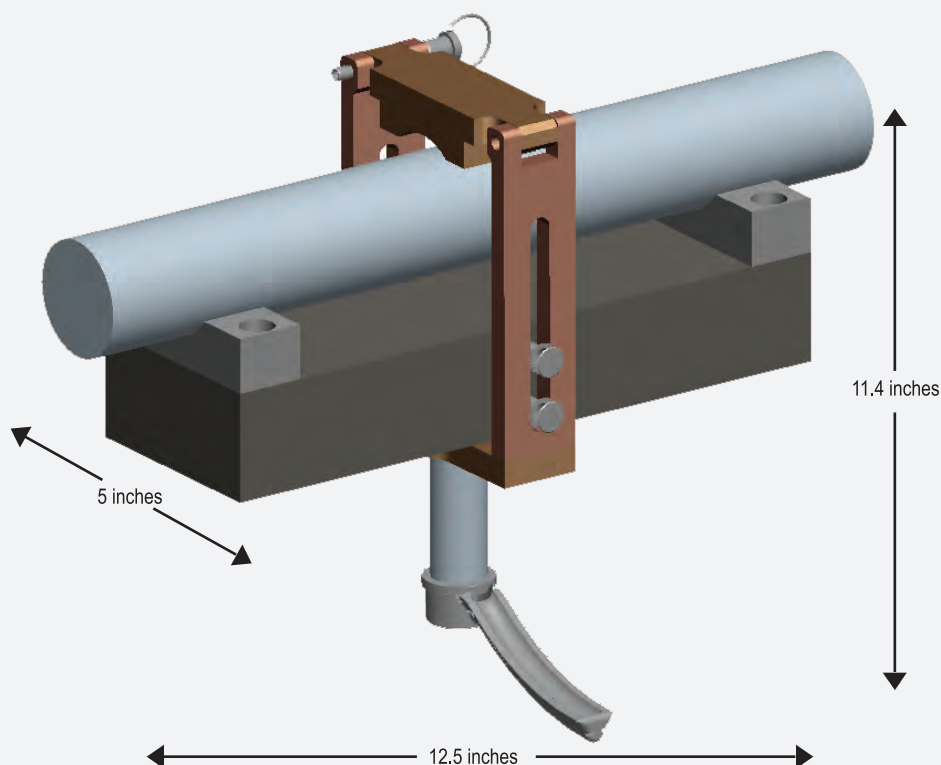
Supply Voltage: 10-28 VDC
Current Requirement/Output: 4 -20 mA
Output: 2 wire current loop
Accuracy: 5% FS
Stability: (1 Year) $\pm 0.25\%$ FS, type
Zero Offset: $< \pm 1\%$ of FS
Span Tolerance: $< \pm 2\%$ of FS
Output Load: 0-800 Ohms @ 10-28VDC

Temperature

Operating: -40 to 85°C (-40 to 185°F)
Storage: -40 to 100°C (-40 to 212°F)

Other

Shock: 100G, 11 msec, 1/2 sine
Vibration: 10G peak, 20 to 2000 Hz.
Rating: IP-66



Patents Pending

1. The unit is Intrinsically Safe. 4-20 mA standard output transducer.
2. Stainless Steel contact points
3. Connector - Customer Specified
4. IS certification to ATEX in place, IECEx, Canadian and Ex (US) Certs are planned
5. Weight Range 100K typical, can be specified by the customer

4-19-2018



ASDH MaxWT Field Repairable Hook Load Transducer

Page 2

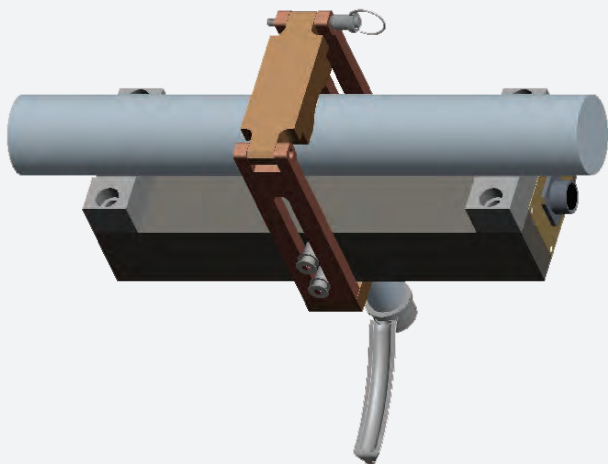
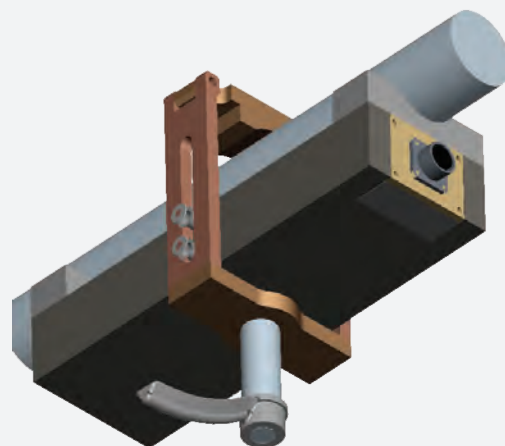
ASD Holdings presents MAX WT HLT, an Intrinsically Safe, 4- 20mA field repairable unit that allows the user to be able to change electronic sensing mechanism in the local district with a simple change out of the end-block sensor. No need to send the entire HLT back to manufacturer to repair the HLT. We ship the replaceable end block to you! Anywhere in the world!!

We have reduced the weight of the HLT to 15 pounds, this makes installation easier and safer.

The handle has been repositioned in order to allow the installer to crimp the drilling line with less effort than conventionally placed handles the are positioned on top of the cable. Once cable is crimped and locked in the unit is ready to be calibrated and

MAX WT HLT, has an output of 100,000 pounds, assuming a traveling block sheave has 10 (ten parts-of-line). Parts of line is the number of running ropes supporting a load or force. Therefore, a lifting system with 10 parts of line can divide a 1,000,000 pound max load into 100,000 pounds of force needed to move said load. We can increase this MAX WT HLT output capacity if customer has a larger rig with higher lifting load requirements. Just let us know!!

True Plug and Play System: MAX WT HLT, has customer specified connector capability. We will install a male connector on the HLT that matches the clients existing cabling system. No need to build crossovers or ship mating connectors.



For example, if a client has a Turck cabling and junction box system in the field, ASD Holdings will install the equivalent male connector, with exact pin configuration of Power and Signal to match client's system for true plug and play capability.

All that is needed is the model number of the client's connector and pin out and we will select the mating male connector to be installed on the HLT. We can also provide the system with cable gland and pigtails if needed.